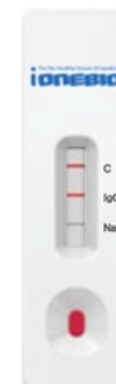
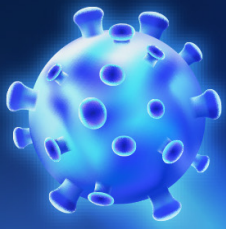


# iONE Neutralized Antibody Detection Kit

iONEBIO, Inc.

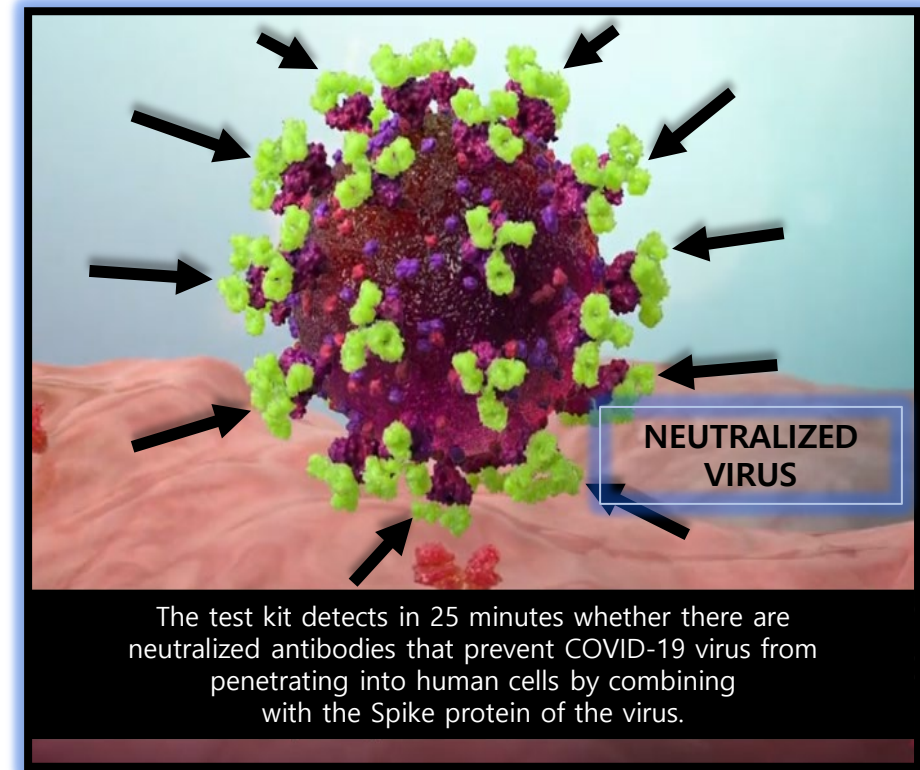
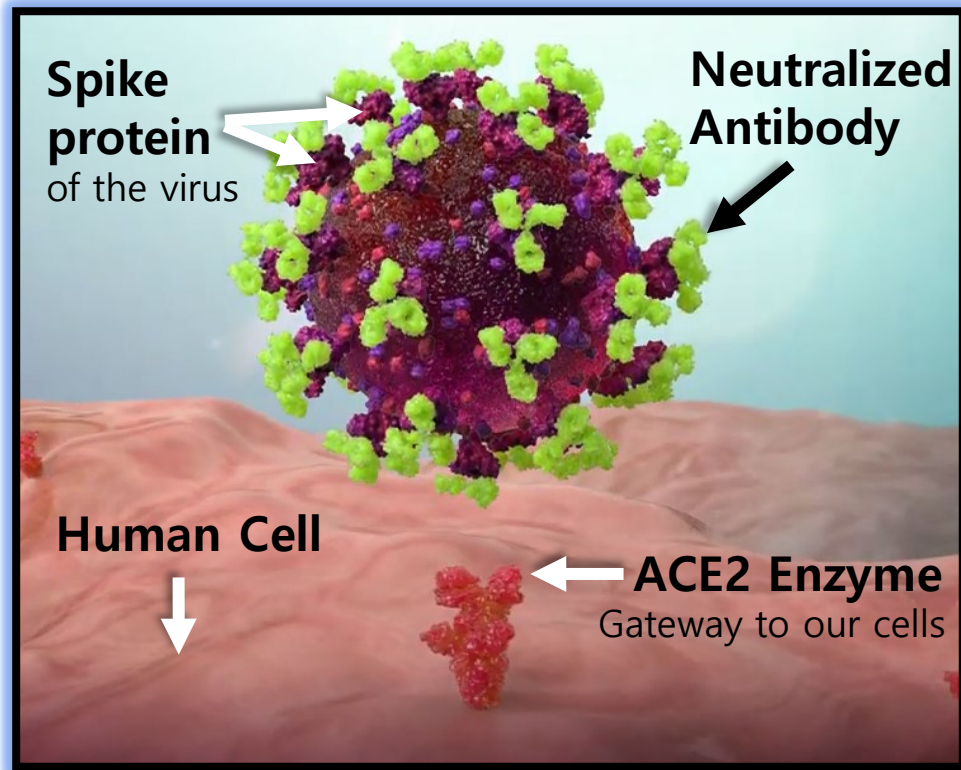
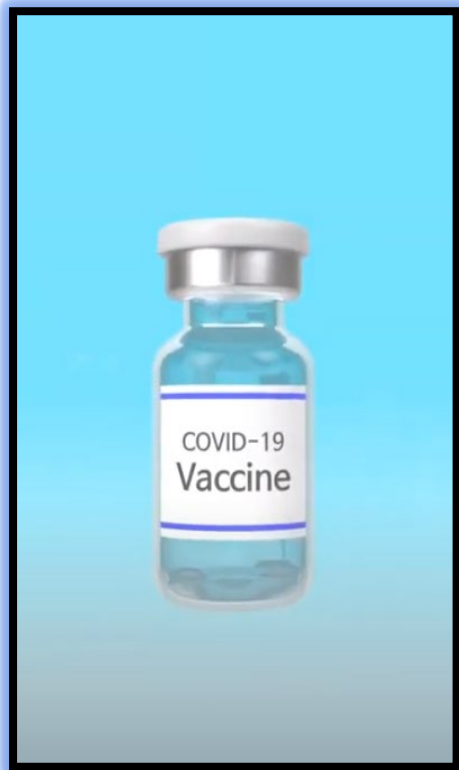
▶ Video Introduction on  
iONE Neutralized Antibody Detection Kit

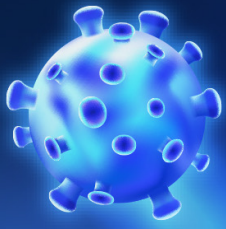




# YouTube Video

 **CLICK HERE**





# 1. Product Overview

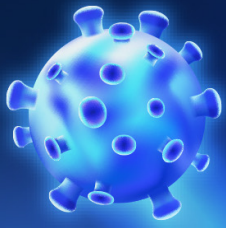
## iONE Neutralized Antibody Detection Kit



## Specification

- Antibody Test Kit
- 25 tests per kit/box, sample diluent 1 bottle
- Simple Protocol
- Result analysis in 25~30 min
- Store at 2~35°C in the sealed pouch

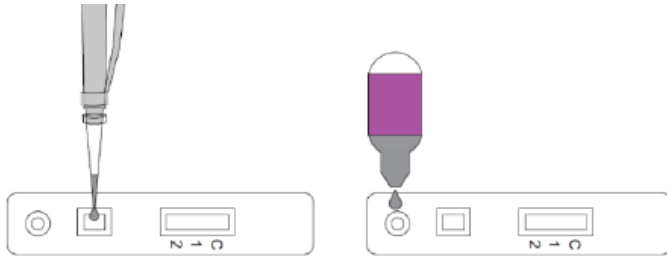




## 2. Test Method

### Simple Test Step

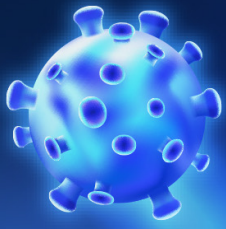
1. Add specimen into sample well.
2. Add diluent(100uL/3drops) into sample well



**Result determination time:** The result should be judged within **25~30 minutes** after the sample is added into the sample loading well, and the result displayed after **30 minutes** is invalid.

### Result Analysis

1	<p><b>IgG Positive and Neutralizing antibody Negative:</b> Three lines appear. One colored line should be in the control line region (C), a colored line appears in IgG test line (1) region , and a colored line appears in Neutralizing antibody test line (2) region which is <b>darker or equal than C line</b>.</p>	
2	<p><b>IgG Positive and Neutralizing antibody Positive:</b> Two or three lines appear. One colored line should be in the control line region (C), a colored line appears in IgG test line (1) region , and a colored or no line appears in Neutralizing antibody test line (2) region which is <b>lighter than C line</b>.</p>	
3	<p><b>NEGATIVE:</b> Two lines appear. One colored line should be in the control line region (C), and a colored line appears in Neutralizing antibody test line (2) region which is <b>darker or equal than C line</b>.</p>	
4	<p><b>INVALID:</b> Control line fails to appear. Insufficient buffer volume or incorrect procedural techniques are the most likely reasons for control line failure. Review the procedure and repeat the procedure with a new test cassette. If the problem persists, discontinue using the test kit immediately and contact your local distributor.</p>	



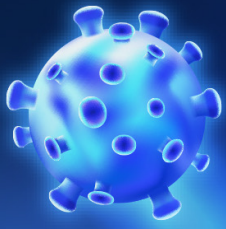
### 3. Test Benefit

#### Why Gold type kit is best for Neutralized antibody test

	Gold type	Fluorescent type	ELISA type
Time	20'	20'	2 hour
LoD(Limit of Detection)	10 <sup>4</sup>	10 <sup>3</sup>	10 <sup>2</sup>
Accuracy	Medium (qualitative)	Medium (qualitative)	High (quantitative)
Convenience	Good (No need for equipment)	Medium (Need an equipment)	Bad (Need an equipment)
Application	Best	Medium	bad

- It's important to verify above **10<sup>4</sup> copies of antibodies for neutralized antibody test kit**.  
=> Fluorescent type not necessary.
- For neutralized antibody test kit, **“rapidity”** is more important than accuracy.  
=> ELISA type is good for research purpose but not appropriate for point of care settings due to its long analysis time.

**“Gold type” test kit is the most optimal because of the speed and convenience**



## 4. Product Features

### iONE Neutralized Antibody Detection Kit



### Product Features

1



Results are available in **25~30 minutes**

2

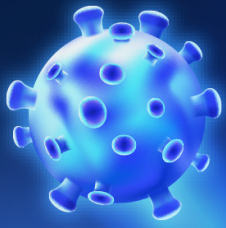


High Throughput (**Over 10,000 tests/day**)

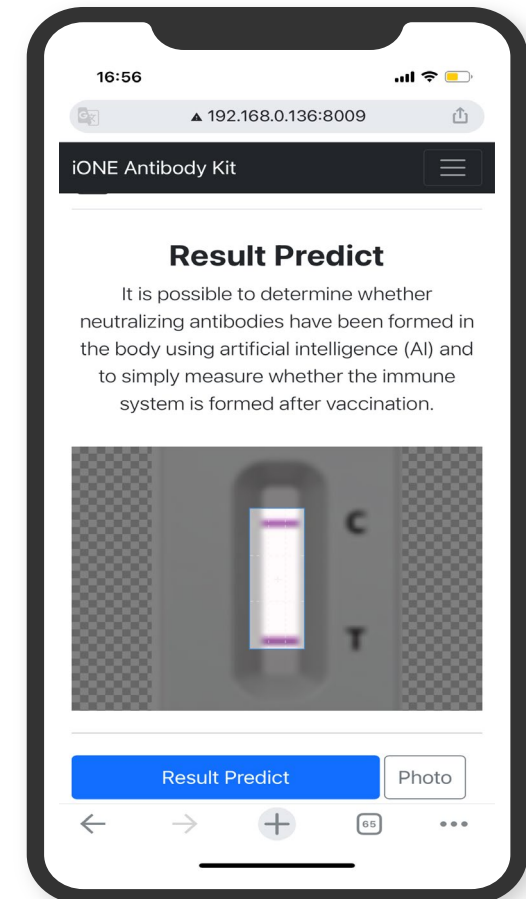
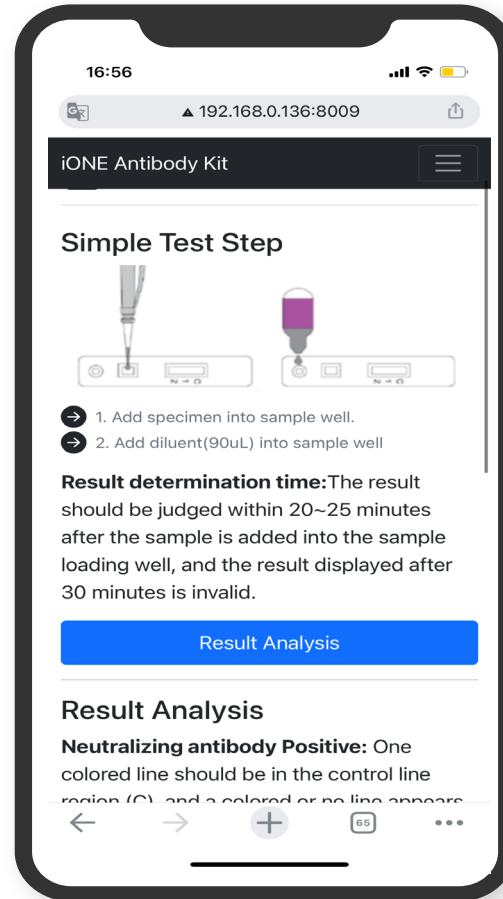
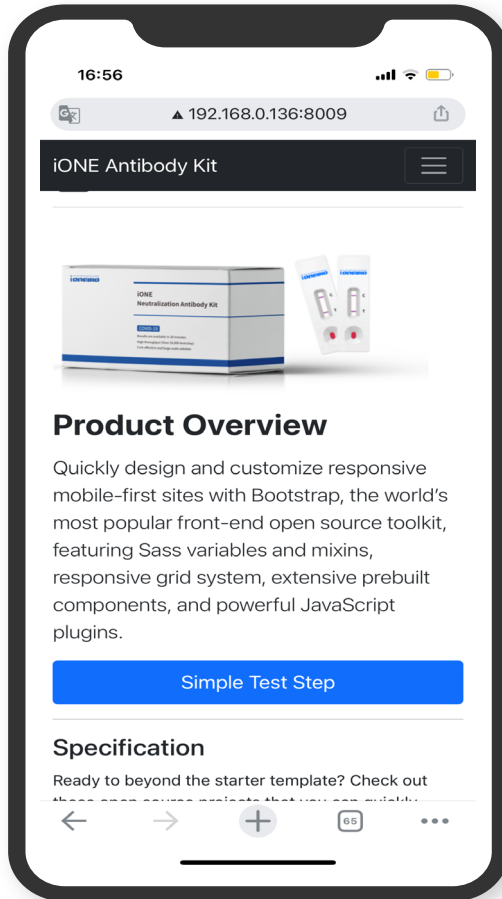
3

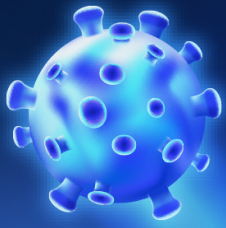


**Cost-effective** and **large-scale** solution

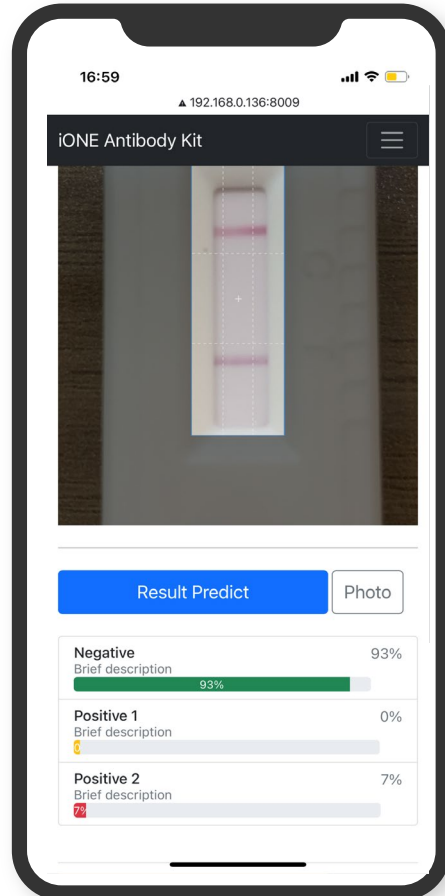
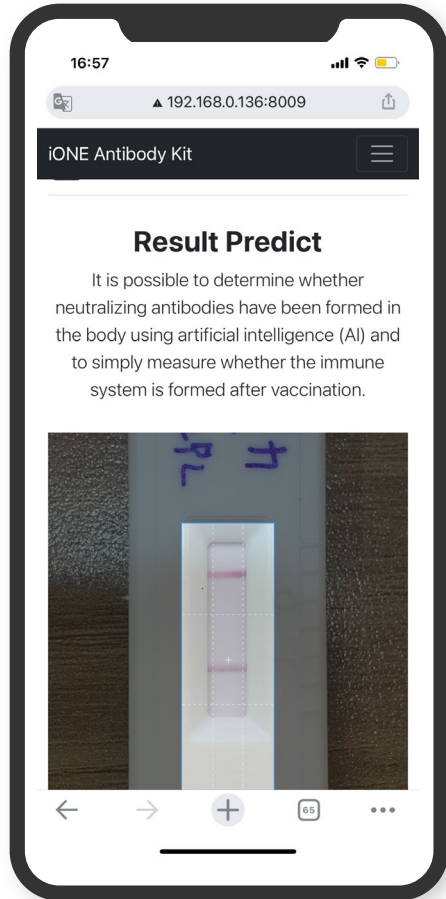


# 5. AI Deep Learning





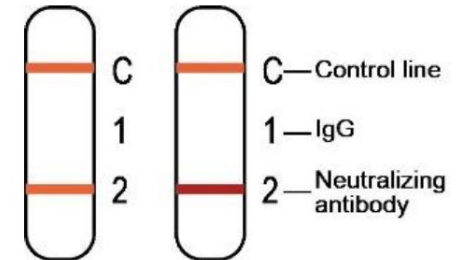
# 5. AI Deep Learning



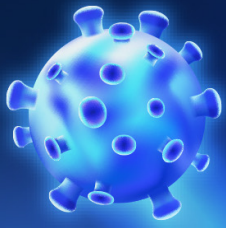
**NEGATIVE:** Two lines appear. One colored line should be in the control line region (C), and a colored line appears in Neutralizing antibody test line (2) region which is *darker or equal than C line*.



<b>Negative</b>	93%
Brief description	<div style="width: 93%; background-color: green;">93%</div>
<b>Positive 1</b>	0%
Brief description	<div style="width: 0%; background-color: orange;">0%</div>
<b>Positive 2</b>	7%
Brief description	<div style="width: 7%; background-color: red;">7%</div>







# 6. KNU Clinical Results



## 임상시험 결과 보고서

iONE Neutralized Antibody Detection Kit의 평가  
Evaluation of iONE Neutralized Antibody Detection Kit

2021.05.06

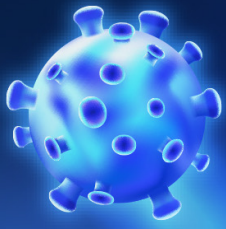
강원대학교병원 진단검사의학과

서 인 범 (인)

Sample No.	RT-PCR Data		Result	RT-PCR Test & confirmation date	Serum collection date	PRNT50 Data		이이엔비이오 키트	
	E gene	RdRp gene				Titer	Result	IgG	중립 항체
4-2	32.35	32.99	POS	2020-06-09	2020-06-29 (+20 days)	20	Pos	Pos	Pos
6-1	21.68	21.03	POS	2020-07-03	2020-08-10 (+38 days)	40	Pos	Pos	Pos
7-1	26.84	26.05	POS	2020-04-07	2020-05-19 (+42 days)	>320	Pos	Pos	Pos
8-1	21.69	20.63	POS	2020-03-05	2020-05-11 (+67 days)	>320	Pos	Pos	Pos
8-4	21.79	20.86	POS	2020-03-05	2020-04-09 (+35 days)	>320	Pos	Pos	Pos
8-5	19.4	20.6	POS	2020-08-10	2020-09-12 (+33 days)	>320	Pos	Pos	Pos
8-6	22.22	21.25	POS	2020-03-05	2020-05-04 (+60 days)	>320	Pos	Pos	Pos
8-7	30.19	28.94	POS	2020-04-07	2020-04-28 (+21 days)	>320	Pos	Pos	Pos
14-10	26.81	29.08	POS	2020-03-20	2020-04-03 (+14 days)	80	Pos	Pos	Pos
16-1	26.4	25.97	POS	2020-02-28	2020-03-14 (+15 days)	160	Pos	Pos	Pos
17-1	27.98	27.14	POS	2020-07-10	2020-07-27 (+17 days)	80	Pos	Pos	Pos
21-5	22.44	25.39	POS	2020-04-20	2020-05-01 (+11 days)	80	Pos	Pos	Pos
21-6	31.93	31.47	POS	2020-08-22	2020-08-31 (+9 days)	160	Pos	Pos	Pos
21-7	32.66	32.5	POS	2020-07-15	2020-07-27 (+12 days)	160	Pos	Pos	Pos
21-10	29.46	28.97	POS	2020-03-20	2020-04-01 (+12 days)	160	Pos	Pos	Pos
21-11	26.68	28.15	POS	2020-09-01	2020-10-09 (+30 days)	>320	Pos	Pos	Pos
21-13	25.89	26.79	POS	2020-08-24	2020-09-23 (+30 days)	>320	Pos	Pos	Pos
21-15	32.85	33.13	POS	2020-09-02	2020-09-23 (+21 days)	>320	Pos	Pos	Pos
27-5	28.23	28.01	POS	2020-09-12	2020-10-12 (+30 days)	>320	Pos	Pos	Pos
30-3	28.63	30.33	POS	2020-02-22	2020-04-14 (+52 days)	20	Pos	Pos	Pos
30-5	32.53	32.24	POS	2020-06-05	2020-06-29 (+24 days)	40	Pos	Pos	Pos
32-3	33.99	34.48	POS	2020-06-05	2020-06-15 (+10 days)	20			
33-2	22.39	25.39	POS	2020-04-20	2020-04-28 (+8 days)	40			
34-2	26.99	26.76	POS	2020-08-21	2020-08-30 (+9 days)	80			
35-4	21.91	20.79	POS	2020-09-10	2020-10-12 (+32 days)	160			
39-8	29.75	31.17	POS	2020-03-02	2020-05-04 (+63 days)	80			



IgG	Positive Percent Agreement (PPA)= 37/39 (94.87%)
	Negative Percent Agreement (NPA)= 15/15 (100%)
nAb	Positive Percent Agreement (PPA)= 37/39 (94.87%)
	Negative Percent Agreement (NPA)= 15/15 (100%)



# 7. Who We Are



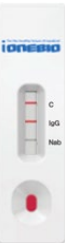
iONEBIO is a developer & manufacturer of **iLAMP Novel-CoV19 Detection Kit**, the 25 min test kit. As a K-bio company, we have been gaining expertise on molecular diagnosis, genetic analysis and other medical devices. The iLAMP Novel-CoV19 Detection Kit has secured a strong competitiveness edge having advantages in speed and accuracy.

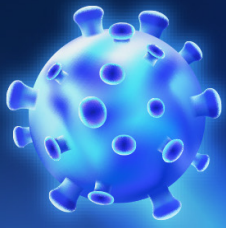
**2018** Genetic Analysis Certification (DNA Testing Lab & Platform)  
Urine Analyzer Research & Development  
**Oral Cancer Detection Biomarker**

**2019** **Oral Cancer Test Kit assigned for national task project** (Cooperation with Seoul National University)  
3D Intra Oral Scanner Development – Prototype Finished

**2020** **iLAMP Novel-CoV19 Detection Kit – CE marked**  
**iLAMP High-Speed Test Kit – CE marked**  
**FICS Platform in Paraguay**  
iONE-MASK face mask Manufacture

**2021** Other Virus & Influenza Test Kit Research & Development  
Exporting COVID-19 and other Influenza test kits to 50 countries  
Oral Cancer Test Kit Launching





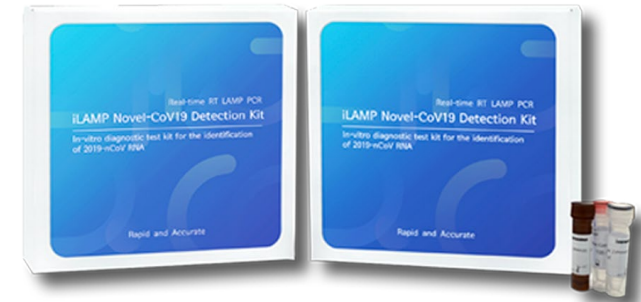
## 8. Products of iONEBIO



Swab Kit



RNA Extraction Machine



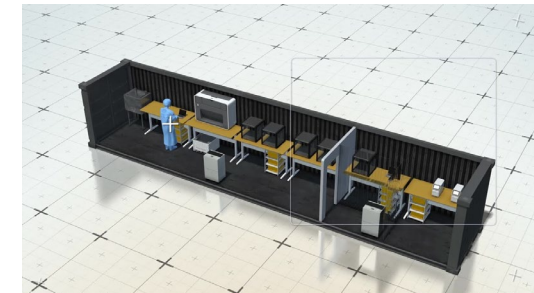
COVID-19 Test Kit



PCR Instrument

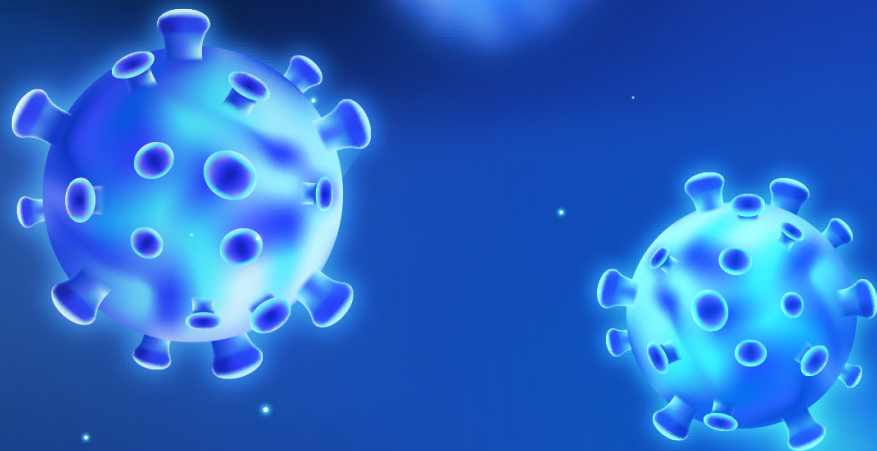


COVID-19 Analysis Vehicle



Container Analysis Lab





# Thank You

## Contact Information

### Overseas Business Team

**Lucy Lee** / [lucy.lee@ionebio.com](mailto:lucy.lee@ionebio.com) (Support Language: English, Korean)

**Danny Kim** / [kh.kim@ionebio.com](mailto:kh.kim@ionebio.com) (Support Language: Chinese, Korean)

**Pearl Pyun** / [pearl.pyun@ionebio.com](mailto:pearl.pyun@ionebio.com) (Support Language: Spanish, Korean)

### Website

**[ionebio@ionebio.com](mailto:ionebio@ionebio.com)**

**[www.ionebio.com](http://www.ionebio.com)**

**T: +82 31 360-1210**

**F: +82 31 360-1220**